

T2000 - Process Volume Capacity 2000 Litres Per Cycle



The Sustainable & Proven Treatment Solution for
Infectious, Biomedical Waste

Technical Specifications

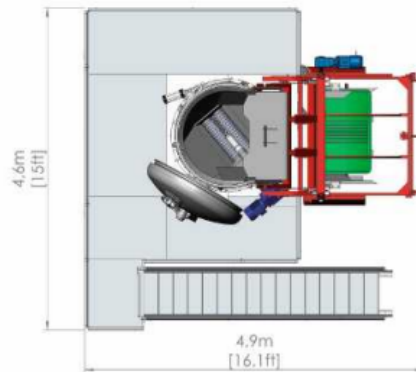
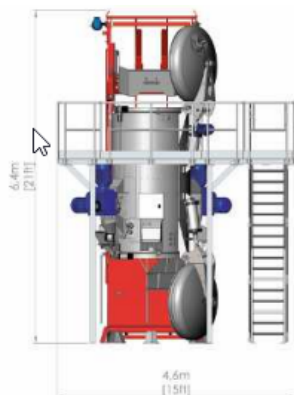
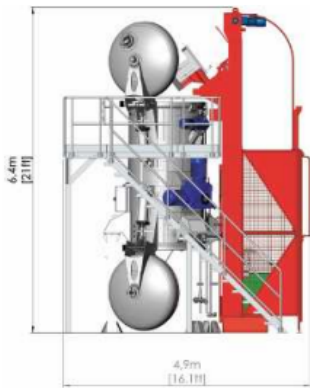
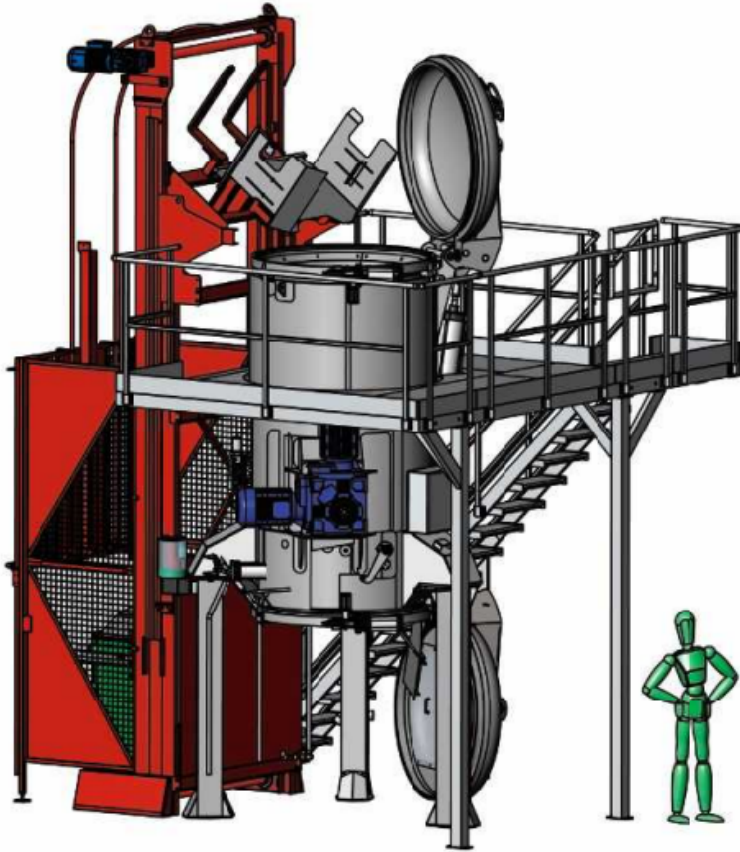
Dimensions (L x W x H)	490 x 460 x 640 cm 16,1 x 15,1 x 21 ft
Shipping Weight	5200 kg
Max weight when filled with water For a special hydraulic test	10500 kg
Stress	3,5 kg/cm ²
Steam Pressure	8 bar
Max Steam Flow	500 kg/h
Compressed Air	6 bar
Electricity 380 V / 3-Phase	35 kW

Operating Characteristics

Average Cycle Time	45 minutes
Process Volume Capacity	2500 liters
Average Waste Density	100 - 150 kg/m ³
Average Process Weight Capacity	250 - 375 kg/cycle 551 - 827 lb/cycle
Microbial Inactivation	10 ⁶
Waste Volume Reduction	80%

Consumption/Cycle

Steam	40 kg
Electricity	9 kWh
Water	50 liters



G&N Laboratory
Maydwell Avenue, off Stane Street,
Slinfold, Horsham, West Sussex
RH13 0GN
+44 (0) 1403 799190
medsales@gandn.com



Call us Now on 07795 385273 to take
control of your waste